

## Injury attendances to Royal Bolton Hospital Emergency Department

### January to December 2011

This report summarises recorded injury attendances to Royal Bolton Emergency Department (ED) between January and December 2011.

Between January and December 2011 there were 42,256 injury attendances to Royal Bolton ED. Males accounted for over half (53%) of these attendances. The month with the highest attendances was January (n=4,044) with March having the lowest (n=2,775) (**Figure 1**). Of the specified injury groups falls (9%) accounted for the highest proportion followed by road traffic collision (RTC) (4%), sports injury (4%) and assault (4%) (**Table 1**).

The highest proportion of attendances was for persons aged 20-34 (24%) and 5-19 (20%) years (**Figure 2**). Almost half (47%) of fall attendees were aged 65 or over while nearly three in ten (27%) of burns and scalds injuries were sustained by 0 to 4 year olds. Nearly four in ten (38%) of RTC attendees were aged 20-34 (**Figure 3**).

**Table 2** shows the ethnicity of attendees to Royal Bolton ED. Seven in ten (70%) were white.

The disposal of a patient can give an indication of the severity of the injuries sustained. Over four in ten (41%) of attendees were referred, over a third (36%) were discharged and 15% were admitted (**Table 3**). Over half (51%) of burns and scalds attendees were referred, while over a quarter (27%) of deliberate

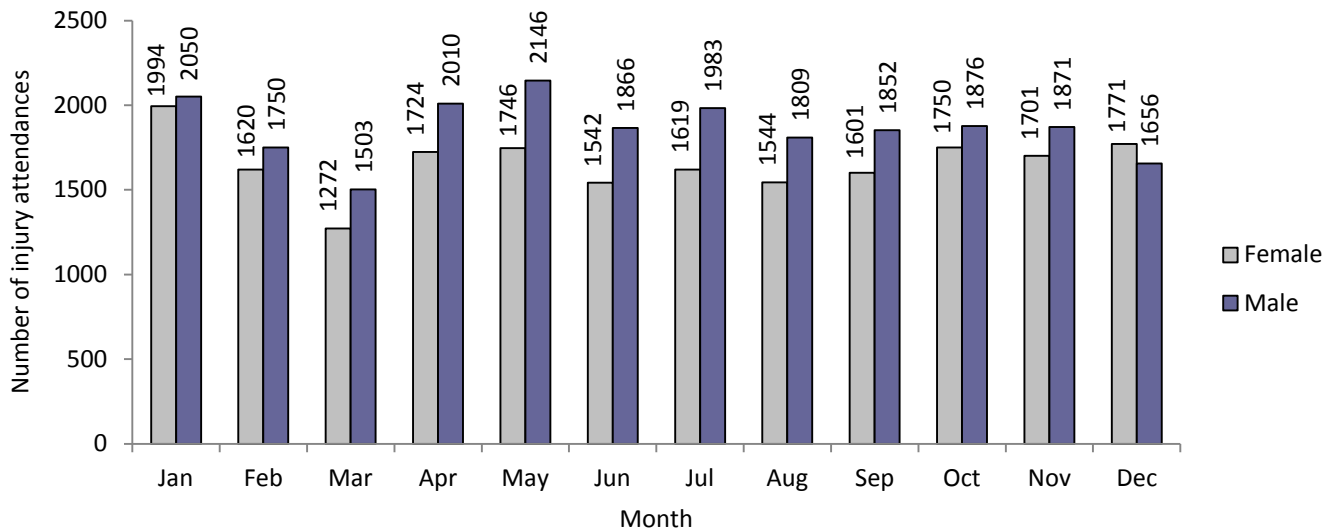
self-harm (DSH) attendees were admitted. Almost two-fifths (37%) of assault attendees were discharged. One in five (20%) of fall attendees were admitted (**Table 4**).

**Table 5** shows the arrival methods of attendances at Royal Bolton ED. Three-quarters (75%) of attendees arrived by foot, whilst a quarter (25%) arrived by ambulance.

**Table 6** shows the location of the incident of the main injury groups (excluding other injury). Almost six in ten (58%) of all injuries occurred in the home.

**Table 7** presents data for assault attendees to Royal Bolton ED. Males represent over six in ten (61%) of assault attendances, whilst almost half (47%) of assault attendees were aged 20 to 34. Almost half (49%) of assault attendees arrived by ambulance.

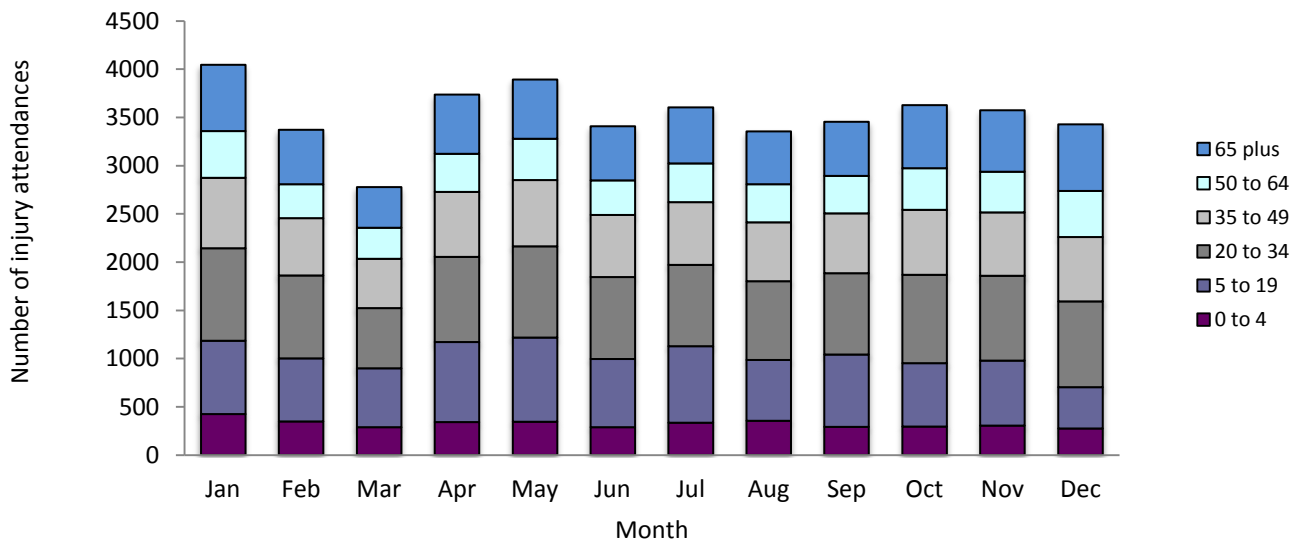
**Figure 1: Royal Bolton ED: Total injury attendances by gender and month, January to December 2011**



**Table 1: Royal Bolton ED: Total injury attendances by injury group and month, January to December 2011<sup>1</sup>**

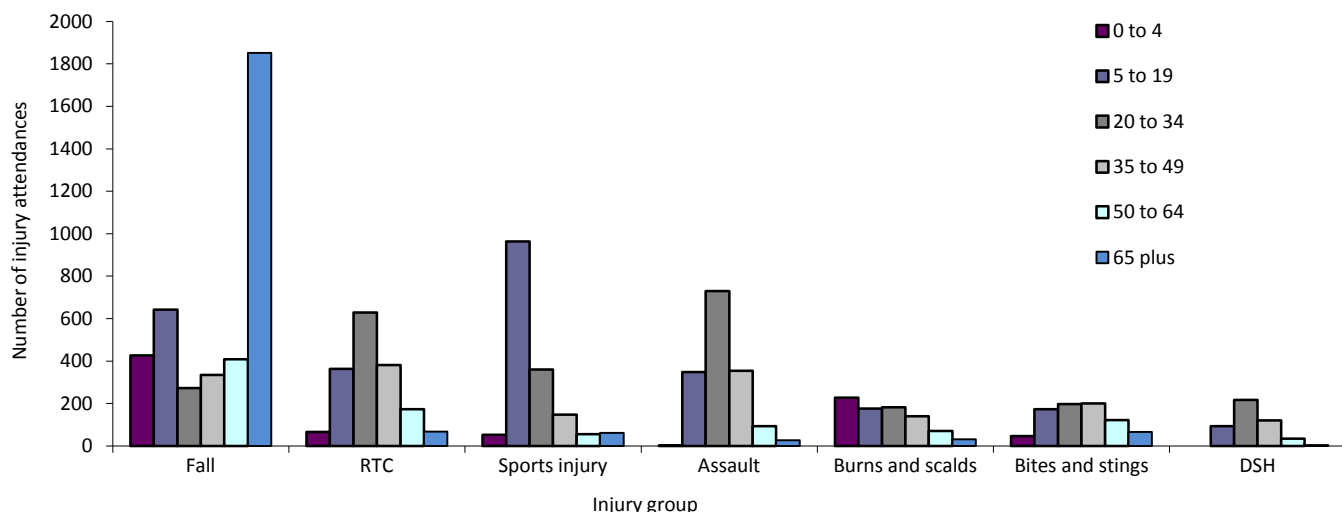
Injury group	Jan	Feb	Mar	Apr	May	Jun	Jul	Aug	Sep	Oct	Nov	Dec	Total	%
Other injury	3061	2516	2150	2668	2910	2516	2571	2393	2493	2671	2766	2619	31334	74
Fall	436	361	287	366	329	271	348	335	334	315	226	329	3937	9
RTC	172	123	67	125	157	161	132	167	132	172	124	149	1681	4
Sports injury	96	108	89	206	199	144	163	101	170	156	162	47	1641	4
Assault	131	136	85	175	120	110	152	123	125	139	132	129	1557	4
Burns and scalds	68	51	38	87	73	74	64	73	73	70	84	73	828	2
Bites and stings	44	34	33	69	60	98	117	112	86	70	44	41	808	2
DSH	36	41	26	38	44	34	55	49	40	33	34	40	470	1
<b>Total</b>	<b>4044</b>	<b>3370</b>	<b>2775</b>	<b>3734</b>	<b>3892</b>	<b>3408</b>	<b>3602</b>	<b>3353</b>	<b>3453</b>	<b>3626</b>	<b>3572</b>	<b>3427</b>	<b>42256</b>	<b>100</b>

**Figure 2: Royal Bolton ED: Total injury attendances by age group and month, January to December 2011**



<sup>1</sup> Firework injury has been included in other injury due to low numbers (n<5)

**Figure 3: Royal Bolton ED: Total injury attendances by age group and injury group (excluding other injury), January to December 2011**



**Table 2: Royal Bolton ED: Total injury attendances by ethnicity and month, January to December 2011<sup>2\*</sup>**

Ethnicity	Jan	Feb	Mar	Apr	May	Jun	Jul	Aug	Sep	Oct	Nov	Dec	Total	%
White	2867	2402	1899	2570	2772	2364	2498	2318	2416	2600	2543	2425	29674	70
Not stated	492	395	384	523	494	482	439	472	455	422	444	387	5389	13
Not known	354	313	269	337	322	288	370	306	315	309	303	298	3784	9
Indian	117	95	67	88	87	99	108	76	99	111	91	96	1134	3
Pakistani	102	85	74	91	103	96	93	89	91	93	93	113	1123	3
Black	32	29	17	37	29	30	30	24	16	26	23	29	322	1
Mixed	36	19	23	37	31	14	20	25	24	30	25	22	306	1
Any other ethnic group	24	15	21	19	25	17	16	26	16	17	20	28	244	1
Any other Asian background	16	13	18	22	21	17	18	11	19	10	21	22	208	0
Chinese	***	***	***	***	***	***	***	***	***	***	***	***	40	0
Bangladeshi	***	***	***	***	***	***	***	***	***	***	***	***	32	0
<b>Total</b>	<b>4044</b>	<b>3370</b>	<b>2775</b>	<b>3734</b>	<b>3892</b>	<b>3408</b>	<b>3602</b>	<b>3353</b>	<b>3453</b>	<b>3626</b>	<b>3572</b>	<b>3427</b>	<b>42256</b>	<b>100</b>

\*Percentages may not add up to 100 due to rounding

**Table 3: Royal Bolton ED: Total injury attendances by method of disposal and month, January to December 2011**

Disposal	Jan	Feb	Mar	Apr	May	Jun	Jul	Aug	Sep	Oct	Nov	Dec	Total	%
Referred/follow-up	1871	1311	1120	1478	1557	1288	1389	1280	1353	1570	1530	1415	17162	41
Discharged	1172	1121	947	1384	1471	1339	1445	1408	1371	1309	1245	1172	15384	36
Admitted	698	615	474	533	577	514	506	410	501	498	546	609	6481	15
Other	303	323	234	339	287	267	262	255	228	249	251	231	3229	8
<b>Total</b>	<b>4044</b>	<b>3370</b>	<b>2775</b>	<b>3734</b>	<b>3892</b>	<b>3408</b>	<b>3602</b>	<b>3353</b>	<b>3453</b>	<b>3626</b>	<b>3572</b>	<b>3427</b>	<b>42256</b>	<b>100</b>

**Table 4: Royal Bolton ED: Total injury attendances by method of disposal and injury group (excluding other injury), January to December 2011**

Disposal	Assault		Bites and stings		Burns and scalds		DSH		Fall		RTC		Sports injury		Total	
	n	%	n	%	n	%	n	%	n	%	n	%	n	%	n	%
Discharged	623	40	376	47	315	38	92	20	1331	34	847	50	784	48	4368	40
Referred/follow-up	579	37	345	43	425	51	153	33	1346	34	658	39	697	42	4203	38
Admitted	88	6	26	3	7	1	128	27	802	20	87	5	101	6	1239	11
Other	267	17	61	8	81	10	97	21	458	12	89	5	59	4	1112	10
<b>Total</b>	<b>1557</b>	<b>100</b>	<b>808</b>	<b>100</b>	<b>828</b>	<b>100</b>	<b>470</b>	<b>100</b>	<b>3937</b>	<b>100</b>	<b>1681</b>	<b>100</b>	<b>1641</b>	<b>100</b>	<b>10922</b>	<b>100</b>

<sup>2</sup> Please note that all numbers less than five have been suppressed in line with patient confidentiality and if there is only one number <5 in a category then two numbers will be suppressed at the next level.

**Table 5: Royal Bolton ED: Total injury attendances by arrival mode and month, January to December 2011**

Arrival mode	Jan	Feb	Mar	Apr	May	Jun	Jul	Aug	Sep	Oct	Nov	Dec	Total	%
Foot	2977	2399	2084	2822	2956	2537	2761	2564	2587	2701	2658	2445	31491	75
Ambulance	1056	963	686	908	932	865	833	783	860	918	899	976	10679	25
Other	11	8	5	***	***	6	8	6	6	7	15	6	86	0
<b>Total</b>	<b>4044</b>	<b>3370</b>	<b>2775</b>	<b>3734</b>	<b>3892</b>	<b>3408</b>	<b>3602</b>	<b>3353</b>	<b>3453</b>	<b>3626</b>	<b>3572</b>	<b>3427</b>	<b>42256</b>	<b>100</b>

\*Arrival by helicopter has been included in other due to low numbers (n=36).

**Table 6: Royal Bolton ED: Total injury attendances by location and injury group (excluding other injury), January to December 2011\***

Incident location	Assault		Bites and stings		Burns and scalds		DSH		Fall		RTC		Sports injury		Total	
	n	%	n	%	n	%	n	%	n	%	n	%	n	%	n	%
Educational establishment	***	***	***	***	***	***	***	***	171	4	***	***	252	15	452	4
Home	750	48	523	65	684	83	366	78	2867	73	507	30	609	37	6306	58
Not specified	***	***	***	***	***	***	***	***	19	0	***	***	***	***	25	0
Other	412	26	197	24	104	13	73	16	740	19	544	32	504	31	2574	24
Public place	346	22	64	8	7	1	29	6	111	3	620	37	274	17	1451	13
Work	25	2	20	2	32	4	0	0	29	1	6	0	***	***	114	1
<b>Total</b>	<b>1557</b>	<b>100</b>	<b>808</b>	<b>100</b>	<b>828</b>	<b>100</b>	<b>470</b>	<b>100</b>	<b>3937</b>	<b>100</b>	<b>1681</b>	<b>100</b>	<b>1641</b>	<b>100</b>	<b>10922</b>	<b>100</b>

\*Percentages may not add up to 100 due to rounding.

**Table 7: Royal Bolton ED: Total assault attendances by gender, arrival mode, location of incident and age group of attendance, January to December 2011\***

	Assault attendees		All injury attendees (n=42,256)
	n	%	%
<b>Gender</b>			
Male	951	61	53
Female	606	39	47
<b>Arrival mode</b>			
Ambulance	759	49	25
Foot	792	51	75
Other	6	0	0
<b>Location</b>			%**
Not specified	***	0	0
Home	750	48	70
Public place	346	22	7
Other	412	26	18
Work	25	2	2
Educational establishment	***	1	3
<b>Age group</b>			
0 - 4	***	0	9
5 - 19	349	22	20
20 - 34	730	47	24
35 - 49	354	23	18
50 - 64	94	6	11
65 plus	***	2	17

\*Percentages may not add up to 100 due to rounding.

Author: Ian Warren, Published: April 2012

For further information please contact: Centre for Public Health, Research Directorate, Liverpool John Moores University, 2<sup>nd</sup> Floor, Henry Cotton Building, 15-21 Webster Street, Liverpool, L3 2ET, Tel: 0151 231 4513 or Email: [ij.warren@ljmu.ac.uk](mailto:ij.warren@ljmu.ac.uk)  
 Website: [www.tiig.info](http://www.tiig.info) (data requests should be made through the website)